

Spirovent® Drain 30", 36" Air Eliminator and Dirt Separator

Job Name:
Engineer:
Contractor:
Representative:

Tag	Model	Flow	Size	Location

Diagram showing the elevation view of the Spirovent Drain. Dimensions include: D (overall diameter), H2 (total height), hs (height from base to top of lower head), and h2 (height from base to top of upper head).

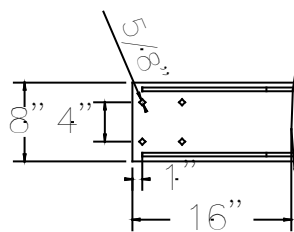
Specifications:

Shell	Steel
Vent Head	Brass
Float	Non-Ferrous
Seal	Viton
O Ring	Viton
Skim Valve	Brass
Coalescing Medium	Copper
Ball Valve	Brass
Max. Working Pressure	150 psig
Max. Operating Temperature	270°F

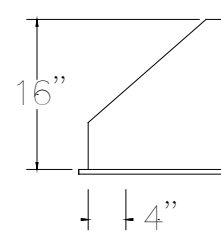
Notes:
Removable lower head to facilitate cleaning if required. Fabricated and stamped in accordance with ASME, Section VIII, Division 1 for unfired pressure vessels.

Diagram showing the cross-section view of the drain. Dimensions include: PS (pressure side) and LF (length).

Pipe Size	30"	36"
D	60"	72"
H2	194"	230"
h2	91"	109"
LF	85.2"	102.8"
hs	30"	36"
e	2"	2"
Weight (lbs)	12,220	19,200
Rec. GPM	12,100	17,400
Model		
VDN----FA	3000	3600



Bracket Detail



Bracket Detail